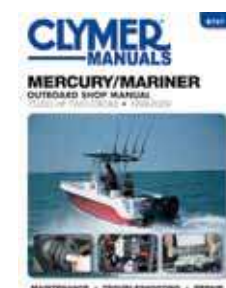
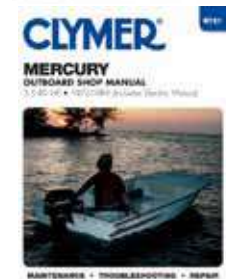
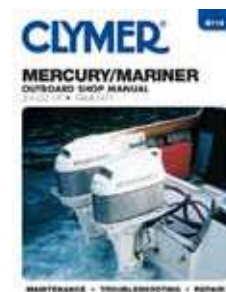


	Mfg #	Description	Years	Order No.	Retail
Navigation Lites	B750	Chrysler 3.5 - 140 hp outboards	'66-'84	<b>15024</b> T	\$36.99
Steering/ Controls	B751-4	Force 4 - 150 hp outboards and L-drives	'84-'99	<b>15025</b> T	36.99
Hardware/ Fasteners	B734	Evinrude/Johnson 1.5 - 125 hp	'56-'72	<b>15016</b> T	\$36.99
	B732	Evinrude/Johnson Electric - 2-40 hp	'73-'90	<b>15015</b> T	36.99
	B736	Evinrude/Johnson 48 - 235 hp	'73-'90	<b>15018</b> T	36.99
Covers/ Windshield	B737-2	Evinrude/Johnson 85-300 hp	'95-'06	<b>15017</b> T	36.99
	B733	Evinrude/Johnson 2 - 300 hp	'91-'94	<b>15014</b> T	36.99
Pumps/ Int. Lites	B735-2	Evinrude/Johnson 2-70 hp	'95-'07	<b>15013</b> T	36.99
	B753	Evinrude/Johnson 5-70 hp 4-Stroke	'95-'01	<b>15005</b> T	36.99
Electric/ Battery	B757-2	Honda 2-130hp A series 4-Stroke & Jet Drives	'76-'07	<b>15045</b> T	\$36.99
Trolling Motor	B712	Mercury 75-225 hp 4-stroke	'01-'03	<b>14993</b> T	\$36.99
Gauges	B719	Mercury 3.9 - 135 hp	'64-'71	<b>15004</b> T	36.99
	B721	Mercury 3.5-40 hp & Electric	'72-'89	<b>15006</b> T	36.99
Electronics/ Radios	B726	Mercury 45 - 225 hp	'72-'89	<b>15009</b> T	36.99
	B722	Mercury 3 - 275 hp	'90-'93	<b>15007</b> T	36.99
Fuel	B723	Mercury 2.5-60 hp	'94-'97	<b>15008</b> T	36.99
	B724	Mercury 75-275 hp	'94-'97	<b>15010</b> T	36.99
Lube/ Motor Care	B710	Mercury 4-90 hp four stroke O/B	'95-'06	<b>15011</b> T	36.99
	B725	Merc/Mariner 2.5-60 hp	'98-'06	<b>14990</b> T	36.99
Aux. Brkts/ Tilt/Trim	B727	Merc/Mariner 2-strk 75-250 hp	'98-'09	<b>14992</b> T	36.99
	B715	Mariner 2.5 - 275 hp	'90-'93	<b>15003</b> T	36.99
Spark Plug/ Starters	B714	Mariner Electric - 2-220 hp	'76-'89	<b>15002</b> T	36.99
Props	B740	Mercruiser stern drives	'64-'85	<b>15021</b> T	\$36.99
	B742	Mercruiser Alpha/Bravo stern drives	'86-'94	<b>15022</b> T	36.99
Seats/ Pedestals	B744	Mercruiser Alpha 1, Bravo 1, Bravo 2, Bravo 3	'95-'97	<b>15023</b> T	36.99
	B745-2	Mercruiser Alpha 1, Bravo 1, Bravo 2, Bravo 3	'98-'13	<b>15020</b> T	36.99
Anchors/ Rod Holder	B730	OMC stern drives	'64-'86	<b>15012</b> T	36.99
	B738	OMC Cobra stern drives	'86-'93	<b>15019</b> T	36.99
Winches/ Jacks	B739	OMC Cobra stern drives SX & DP	'94-'00	<b>15048</b> T	36.99
Lites/ Tie Downs	B778	Suzuki 2-stroke O/B 2-65 hp	'92-'99	<b>15028</b> T	\$36.99
	B779	Suzuki 2-Stroke O/B 75-225 hp	'92-'99	<b>15029</b> T	36.99
Tires/ Couplers	B780	Suzuki 2 - 140 hp	'77-'84	<b>15027</b> T	36.99
	B781	Suzuki 2 - 225 hp O/B & Jet Drives	'85-'91	<b>15035</b> T	36.99
Boat Care	B782	Suzuki 4-Stroke O/B 9.9-70 hp	'97-'00	<b>15030</b> T	36.99
Misc./ Flooring	B770	Volvo Stern Drives	'68-'93	<b>15033</b> T	\$36.99
	B771-2	Volvo 4, 6 & 8 cyl SP, DP, Sx, DPx stern drives	'94-'00	<b>15034</b> T	36.99
Ski's/Tubes	B775	Volvo Stern Drives	'01-'04	<b>15032</b> T	36.99
Floatation	B783	Yamaha 2 - 225 hp 2-stroke	'84-'89	<b>15037</b> T	\$36.99
	B784	Yamaha 2 - 250 hp 2-stroke	'90-'95	<b>15038</b> T	36.99
	B785	Yamaha 2 - 250 hp 2-stroke	'96-'98	<b>15039</b> T	36.99
Ladders	B786	Yamaha 2-90 hp 2-stroke	'99-'09	<b>15041</b> T	36.99
	B788	Yamaha 9.9-100 hp 4-stroke	'85-'10	<b>15040</b> T	36.99
Water Front	B789	Yamaha 115-250 hp 2-stroke	'99-'10	<b>15042</b> T	36.99
Fenders/ Dock Lines	B791-2	Yamaha 75-250 hp 4-stroke	'00-'13	<b>15043</b> T	36.99
	MMIC-3	Motor & Boat Reference	'-96	<b>15079</b> T	\$19.99

**CLYMER™**  
Marine Maintenance  
Shop Manuals



Clymer marine manuals offer comprehensive, detailed service information for outboard motors and stern drive units with the most up to date coverage in the industry. The step by step text in these books is geared to do-it-yourself owners as well as expert mechanics. Every conceivable part, assembly is covered in detail and is illustrated with hundreds of photos, drawings and tables.



### Motor Stand

For motors up to 50 hp or 180 lbs.  
Black recycled plastic mounting board.



Mfg #	Order No.	Retail
30400	23116 <sub>THF</sub>	\$169.90



### Motor Stand

For motors up to 15 hp or 85 lbs.  
Black recycled plastic mounting board.



Mfg #	Order No.	Retail
30300	23115 <sub>THF</sub>	\$109.99

G31900



G31800



G31400



G31600



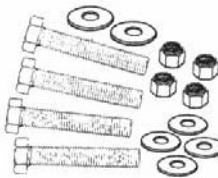
### Motor Carriers

- For ease when storing or moving motors
- Models for outboards and trolling motors from 1 to 115 hp and up to 315 lbs.
- Strong aluminum tube frame
- Black recycled plastic mounting board

*Recycled Plastic  
Mounting Boards!!*



Mfg #	Description	Order No.	Retail
31400	Motor carrier 1-15 hp or up to 85 lbs	23117 <sub>THF</sub>	\$109.90
31600	Motor carrier 1-30 hp or up to 130 lbs	23127 <sub>THF</sub>	149.99
31800	Motor carrier 30-80 hp or up to 265 lbs	23128 <sub>THF</sub>	329.99
31900	Motor carrier 30-115 hp or up to 315 lbs	23129 <sub>THF</sub>	369.99



**Stainless Steel  
Motor Mounting Hardware Kit**  
• 1/2 - 13 x 4" Bolts  
4ea Bolts, 4ea waxed nylock nuts,  
4ea flat washer, 4ea fender washer

Mfg #KT030
Order No. 66535      \$21.82

### Transom Pad

- Protects transom
- Rubber pad is oil and weather resistant
- Reduces motor vibration noise

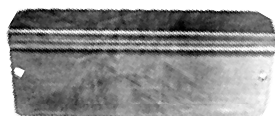


Mfg #099074-10
Order No. 43459      \$36.99



### Aluminum Transom Plate

Holds small outboards on the transom securely.  
Prevents damage to the transom by the clamps.  
Drilled for mounting screws



Mfg #TP-32
Order No. 57790      \$39.99



### Transom Support Plate

Distributes the stress of the motor mounting bolts to protect the transom. 15" x 2".



Mfg #TSP-1-DP
Order No. 57389      \$29.99

Navigation  
LitesSteering/  
ControlsHardware/  
FastenersCovers/  
WindshieldPumps/  
Int. LitesElectric/  
BatteryTrolling  
Motor

Gauges

Electronics/  
Radios

Fuel

Lube/  
Motor CareAux. Brkts/  
Tilt/TrimSpark Plug/  
Starters

Props

Seats/  
PedestalsAnchors/  
Rod HolderWinches/  
JacksLites/  
Tie DownsTires/  
CouplersBoat  
CareMisc./  
Flooring

Skis/Tubes

Floatation

Ladders

Water  
FrontFenders/  
Dock Lines

Navigation  
LitesSteering/  
ControlsHardware/  
FastenersCovers/  
WindshieldPumps/  
Int. LitesElectric/  
BatteryTrolling  
Motor

Gauges

Electronics/  
Radios

Fuel

Lube/  
Motor CareAux. Brkts/  
Tilt/TrimSpark Plug/  
Starters

Props

Seats/  
PedestalsAnchors/  
Rod HolderWinches/  
JacksLites/  
Tie DownsTires/  
CouplersBoat  
CareMisc./  
Flooring

Ski's/Tubes

Floataion

Ladders

Water  
FrontFenders/  
Dock Lines**DAVIS****Extension Handle**

Handi-Mate extends from 30" to 47". Easy to install, tough poly head quickly clamps over the existing handle grip.

Mfg #1440

**Order No. 28235<sub>THF</sub>** \$49.99**Ironwood Pacific  
OUTDOORS****Outboard Extension Handle**

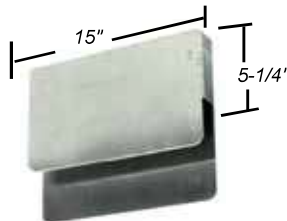
Complete steering and throttle control. Easy to Use, Durable, Flexible. Fits all outboards 15 hp and under.  
• *Adjustable length 36" to 53".*

Mfg #001

**Order No. 29301<sub>THF</sub>** \$79.99**Transom Wedges**

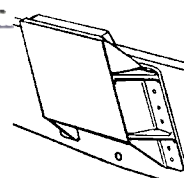
These 5° transom wedges fit newer model OMC & Mercury engines, bolt on engines with factory installed trim & tilt. Cast aluminum construction.

Mfg #TW-2-DP

**Order No. 57388** \$59.99**Transom Elevator**

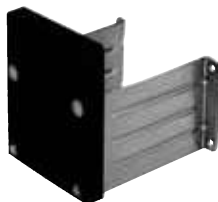
For boats with transoms to 1-3/4" thick. Constructed of aluminum. Allows long shaft motor to be used on short shaft boats. Rated to 40 hp.  
*For Clamp-on or bolt on motors.*

Mfg #TE-217

**Order No. 57788** \$245.99**Mini Jacker**

This cast aluminum offset jack plate is designed to handle clamp-on motors up to 35 hp. The mini jacker has a 4" stand-off. Mounting surface is 11-1/2" wide x 10" high.

Mfg #MJ-1-DP

**Order No. 57330<sub>THF</sub>** \$179.99**Stationary Motor Bracket**

- To 15hp motors
- 304 stainless steel
- 8"x1-1/2" poly board

Mfg #	Order No.	Retail
71074	23630 <sub>TF</sub>	\$81.00

**Stationary Outboard Bracket**

- Up to 15hp or 132 lbs
- Fixed height bracket
- For heavy 4-stroke motors
- 304 Stainless brackets
- Safety cable included

Mfg #	Order No.	Retail
71098	23623 <sub>TF</sub>	\$109.99

**Stationary Outboard Bracket**

- Up to 30hp or 263 lbs
- Fixed height bracket
- For heavy 4-stroke motors
- 304 Stainless brackets
- Safety cable included

Mfg #	Order No.	Retail
71099	23624 <sub>TF</sub>	\$119.99

**Auxiliary Motor Mount**

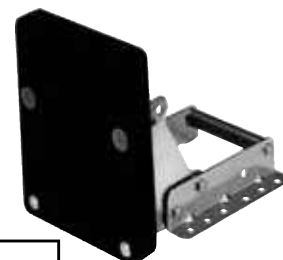
This bracket makes mounting an auxiliary or long shaft motor a snap! It provides 5" of lift to any motor up to 35hp or 263lbs. 2 or 4 stroke motors.

Mfg #55-0405

**Order No. 56907<sub>TW</sub>** \$194.99**Platform Motor Bracket**

- to 15hp motors
- 304 stainless steel
- 8"x 1-1/2" poly board

Mfg #	Order No.	Retail
71078	23632 <sub>TF</sub>	\$109.99





### Auxiliary/Trolling Motor Brackets

- Retractable Bracket for trolling motors on power and sail boats
- Transom mount locks and holds motor up or swings down for propulsion
- Tough alloy anodized aluminum, w/stainless steel springs and bolts
- Fits all style motors (extra wide 11-1/2" black poly mounting board)
- 4-position locking height adjustment
- Stainless steel mounting hardware and instructions included
- 2" thick x 11-1/2" wide mounting pad.



Mfg #	H.P. Rating	Weight Cap.	Travel	Order No.	Retail
71040	8 hp	59 lbs	8-1/2"	<b>23590</b> <sub>TF</sub>	\$159.99
71042	7-1/2 to 12 hp	82 lbs	14-1/4"	<b>23598</b> <sub>TF</sub>	173.99
71057	7-1/2 to 20 hp	115 lbs	11-1/4"	<b>23615</b> <sub>TF</sub>	169.99



### Stainless Steel Auxiliary Motor Bracket

- Easier to lift and lower - Stainless springs help counter balance motor weight
- Transom mount locks and holds motor up or swings down for propulsion
- Built in transom angle adjustment allows optimum motor performance
- Fits all motor styles (11-1/2" wide black poly mounting board)
- 4-position locking height adjustment
- Wide track body for added stability
- Made of tough 304 Stainless steel
- 2" thick x 11-1/2" wide mounting board



Mfg #	H.P. Rating	Weight Cap.	Travel	Order No.	Retail
71039	7-1/2 to 12 hp	82 lbs	14-1/4"	<b>23589</b> <sub>TF</sub>	\$259.00
71056	7-1/2 to 20 hp	115 lbs	11-1/4"	<b>23613</b> <sub>TF</sub>	219.99



### 4-Stroke Outboard Motor Brackets

Built especially for new 4-stroke, heavier, high torque motors.

- Extra wide 11-1/2" black poly mounting board
- Motor safety cable included
- 5 vertical running positions
- Black anodized aluminum construction
- Heavy duty torsion springs



Mfg #	Description	Weight Cap.	Travel	Order No.	Retail
71090	7-1/2 to 30 hp	169 lbs	9-1/2"	<b>23635</b> <sub>TF</sub>	\$309.99
71091	7-1/2 to 25 hp	175 lbs	15-1/2"	<b>23636</b> <sub>TF</sub>	449.99
71093	up to 15 hp	115 lbs	9-1/2"	<b>23617</b> <sub>TF</sub>	329.99
71094	up to 15 hp	115 lbs	15-1/2"	<b>23616</b> <sub>TF</sub>	449.99



### Motor Tilter

The ideal leverage tool for use with motors without power tilt. Helps to tilt back safely without strain. Use with motors up to 40 hp.

Mfg #	Description	Order No.	Retail
71036	Flat Design	<b>23586</b> <sub>T</sub>	\$89.99

Navigation  
LitesSteering/  
ControlsHardware/  
FastenersCovers/  
WindshieldPumps/  
Int. LitesElectric/  
BatteryTrolling  
Motor

Gauges

Electronics/  
Radios

Fuel

Lube/  
Motor CareAux. Brkts/  
Tilt/TrimSpark Plug/  
Starters

Props

Seats/  
PedestalsAnchors/  
Rod HolderWinches/  
JacksLites/  
Tie DownsTires/  
CouplersBoat  
CareMisc./  
Flooring

Ski's/Tubes

Floatation

Ladders

Water  
FrontFenders/  
Dock Lines



Navigation  
Lites

Steering/  
Controls

Hardware/  
Fasteners

Covers/  
Windshield



**Manual Transom Jacks - 5" Lift/5-1/2" set-back**  
The manual power lift is designed to fit any standard motor without drilling. To adjust manual lift simply loosen 4-clamp bolts turn the 1-1/8" nut at the bottom of the bracket to achieve the desired height.



Mfg #	Order No.	Retail
65012	<b>10109<sup>TW</sup></b>	\$394.99

Pumps/  
Int. Lites

Electric/  
Battery

Trolling  
Motor

Gauges



### PL-65 Electric Hydraulic Transom Jacks

- Rated to hold all V6 motors
- 5" Of lift
- 5-1/2" Set-Back
- Standard BIA Bolt hole pattern



Mfg #	Description	Order No.	Retail
65002	Power jack plate with out gauge	<b>10103<sup>TW</sup></b>	\$1154.99
65001	Power jack plate with gauge	<b>10104<sup>TW</sup></b>	1395.99

Electronics/  
Radios

Fuel

Lube/  
Motor Care



### PT 130 Power Trim & Tilt

- Rated to 130 HP
- 20° of trim/90° of total tilt
- 6" Set-Back
- For clamp-on or bolt-on motors
- 7800 lbs of thrust
- Standard BIA bolt hole pattern



Mfg #	Description	Order No.	Retail
13002	Trim/Tilt without gauge	<b>10101<sup>TW</sup></b>	\$914.99
13001	Trim/Tilt with gauge	<b>10102<sup>TW</sup></b>	1079.99
13022	Transom clamp adapter	<b>10105<sup>TW</sup></b>	104.99
13032	Spacer kit for pontoons	<b>10107<sup>TW</sup></b>	61.99

Aux. Brkts/  
Tilt/Trim

Spark Plug/  
Starters

Props

Seats/  
Pedestals

Anchors/  
Rod Holder

Winches/  
Jacks

Lites/  
Tie Downs

Tires/  
Couplers

Boat  
Care



### PT-35 Power Trim and Tilt

- Motors to 35hp
- for clamp/bolt on motors
- 5-1/2" setback
- Weighs only 24 lbs
- Motor width must not exceed 10"
- 84° total trim and tilt

Mfg #52100
<b>Order No. 10100<sup>TW</sup></b> \$771.99



### Atlas Micro Jacker

The smallest lightest hydraulic jack on the market!

- Lifts in 8-seconds
- Lightweight only 23 pounds
- Self contained hydraulics
- Max OB weight 425 lbs
- Max HP 115
- 4" set back
- Optional clampon motor adapter
- Can not be used on a Honda 115HP

Mfg #AHJM-4-DP
<b>Order No. 57244<sup>TW</sup></b> \$999.99



### Atlas Hydraulic Jack Plate

Is built for the heaviest and most powerful V6 engines of today!

- Self contained hydraulic pump system
- Top to bottom in 8 seconds
- Rod and slot lifting design
- Installs in half the time of comparable jack plates
- Can be used for most OB to 300 HP or up to 625# dry weight

Mfg #AHJ-6V-DP
<b>Order No. 57246<sup>TW</sup></b> \$1469.99

Misc./  
Flooring

Ski's/Tubes

Floataion

Ladders

Water  
Front

Fenders/  
Dock Lines



### Fixed Motor Bracket

HD Aluminum bracket is designed to hold 2 or 4 stroke engines weighing up to 150 lbs.

- 5" height adjustment
- 8-1/2" setback

Mfg #55-0027

**Order No. 57104<sub>TW</sub>** \$234.99



### Integral Trim & Tilt

This trim/tilt unit will work with all Johnson/Evinrude 20-35 hp motors 1978 & newer, 2-stroke only.

Will Not Work with 4-Stroke Motors.



**Mfg #**  
55-0025

**Order No.**  
**57102<sub>TW</sub>**

**Retail**  
\$759.99

### Panther 435

#### Fixed Auxiliary Motor Bracket

- Handles motors up to 35 hp
- Adjust 7" or 13"
- Fixed trim



Mfg #55-0435

**Order No. 56911<sub>TW</sub>** \$375.99



### Weekender Series Trim/Tilt

This unit is designed for the weekend fisherman to use on 2 or 4 stroke engines to 150lbs. 8" Setback

Mfg #55-0040

**Order No. 56909<sub>TW</sub>** \$689.99



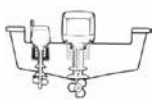
*Raise and lower your motor with push button convenience! Add trim and tilt to any motor. Rugged reliable design. Easy to operate.*

- 5 degrees of tuck under & 60 degrees total tilt • Electro mechanical operation • 7" Transom set back • *Optional Universal Trim Gauge*

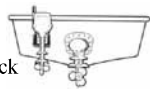
Mfg #	Description	Order No.	Retail
55-0055	Motors to 55 hp	<b>56910<sub>TW</sub></b>	\$769.99
55-0135	Motors to 135 hp *SO	<b>56912<sub>TW</sub></b>	889.99



7" Set Back



12" Set-Back



### Panther 35 Remote Auxiliary Motor Lift!

Raise and lower your auxiliary motor at the touch of a button. Handles motors to 35 hp including 4-stroke motors.

- 5 degree tuck under & 30-60 degree adjust tilt range
- Electro mechanical operation • 7" or 12" transom set back (adjustable)

Mfg #	Description	Order No.	Retail
55-0035	Tilt Assembly	<b>56908<sub>TW</sub></b>	\$694.99
55-0350	Tilt Assembly - <i>fits Ranger boats</i>	<b>57101<sub>TW</sub></b>	824.99
99-55022	Replacement Relay Kit	<b>56914<sub>r</sub></b>	\$63.99



### Replacement Motors

Mfg #	Description	Order No.	Retail
99-55005	Actuator w/motor for 25, 35, 40, 55, 350	<b>57106<sub>TF</sub></b>	\$354.99
99-55115	DC motor for 25, 35, 40, 55, 135, 350	<b>57107<sub>TF</sub></b>	162.99



### Universal Lift Gauge

This unit is truly universal and will fit any jack plate or trim and tilt unit. The 2-1/8" gauge matches most factory installation gauges. Kit contains gauge, sending unit, all wiring and directions.



Mfg #55-1100 \*SO

**Order No. 56921<sub>TW</sub>** \$207.99

Navigation  
Lites

Steering/  
Controls

Hardware/  
Fasteners

Covers/  
Windshield

Pumps/  
Int. Lites

Electric/  
Battery

Trolling  
Motor

Gauges

Electronics/  
Radios

Fuel

Lube/  
Motor Care

Aux. Brkts/  
Tilt/Trim

Spark Plug/  
Starters

Props

Seats/  
Pedestals

Anchors/  
Rod Holder

Winches/  
Jacks

Lites/  
Tie Downs

Tires/  
Couplers

Boat  
Care

Misc./  
Flooring

Ski's/Tubes

Floatation

Ladders

Water  
Front

Fenders/  
Dock Lines

Navigation  
Lites

Steering/  
Controls

Hardware/  
Fasteners

Covers/  
Windshield

Pumps/  
Int. Lites

Electric/  
Battery

Trolling  
Motor

Gauges

**PANTHER**

**\*Special Order\***  
**Pontoon Kicker**  
**Motor Mount Kit**

Our Pontoon Kicker Motor Bracket Kit makes what has long been a difficult installation a breeze. The kit contains the new Adapter Bracket (55-0060) plus the new Swim Platform Bracket (55-0030) with all mounting hardware included. The Adapter Bracket mounts to the pontoon frame rails. Rated for auxiliary motors up to 20 HP.

Mfg #55-0065

**Order No. 56903<sub>TW</sub>** \$429.99**PANTHER**

**Swim Platform**  
**Outboard Motor Bracket**

- Adjustable to mount on most platforms
- Rated for 2/4 stroke motors to 15hp •
- Black powder coated aluminum • *DO NOT use without safety cable included*

Mfg #55-0030 \*SO

**Order No. 56902<sub>TW</sub>** \$259.99

Electronics/  
Radios

Fuel

Lube/  
Motor Care

*Hagen's***Aluminum Spring Loaded Transom Saver**

The Spring loaded design allows extra movement to take additional pressure off of the transom.

- Bottom can rotate 90°
- Rubber stop and strap secure motor

Mfg #MR10-14      26" to 38"  
**Order No. 26216<sub>T</sub>**      Retail \$79.99

Mfg #MR10-16      32" to 44"  
**Order No. 26218<sub>T</sub>**      Retail \$84.99

Aux. Brkts/  
Tilt/Trim

Spark Plug/  
Starters

Props

Seats/  
Pedestals

Anchors/  
Rod Holder

*Hagen's***Steel Powder Coated Transom Saver**

- Durable powder coat finish
- Bottom can rotate 90°
- Rubber stop and strap secure motor
- Fits any size motor

Mfg #	Description	Order No.	Retail
MR10-18	26" to 38"	<b>26210<sub>T</sub></b>	\$59.99
MR10-20	32" to 44"	<b>26212<sub>T</sub></b>	64.99
MR10-12	46" to 54" Pontoon	<b>26214<sub>T</sub></b>	74.99

Winches/  
Jacks

Lites/  
Tie Downs

Tires/  
Couplers

Boat  
Care

Misc./  
Flooring

Ski's/Tubes

*Hagen's***Block Wedge Motor Support**

2-1/2" diameter x 5" long, with  
a 3/4" slot. machined out of high  
quality rubber

**Mfg #      Description      Order No.      Retail**  
MR70-27    Block Wedge      **26262<sub>T</sub>**      \$31.99

*Hagen's***Torpedo Wedge Motor Support**

2-1/2" diameter x 9" long, with a 3/4" slot.  
machined out of high quality rubber

Mfg #MR70-26  
**Order No. 26260<sub>T</sub>**      \$39.99

Floitation

Ladders

Water  
Front

Fenders/  
Dock Lines

**SWIVLEZE**  
by astwood**HD Transom Savers**

- High tensile aluminum tubing
- Adjustable Head



Mfg #	Description	Order No.	Retail
SP4000-ADJ-RB	24" to 36" - Roller/Bolt on Mount - adj. head	<b>00757</b>	\$85.99
SP424-ADJ-RB	32" to 44" - Over the roller mount - adj. head	<b>00755</b>	92.99
SP-410	Replacement Rubber Shocks 4/set	<b>00771</b>	13.99



### Trailer Clips

Simply place in extended trim rams to take shock off of the hydraulic system.

Mfg #18-9099      Mercruiser  
**Order No. 89099<sub>N</sub>**      \$30.39

Mfg #18-9098      Cobra  
**Order No. 89098<sub>N</sub>**      \$23.29



A Unique New Device For Trailering -  
Designed for three ram trim units.  
Simply put the *M-YWedge* on the appropriate trim ram and run the engine down putting pressure on the Rubber support taking all of the shock off of the trailer and transom.

Mfg #M-YM123  
**Order No. 43500<sub>TF</sub>**      \$41.99

**m-y wedge**



### Universal M-Y Wedge

All the benefits of the original M-Y Wedge and uses the main tilt rod on single ram trim units. The Universal M-Y Wedge pops into place over the main tilt rod. *5" Length*

Mfg #M-YU123  
**Order No. 43503<sub>TF</sub>**      \$41.99



### Twist Lock Frame Mount Transom Saver

Twist lock models provide a secure mounting to the trailer. All models are zinc plated and adjustable.

Mfg #	Description	Order No.	Retail
TS-85	23" - 37"	<b>64622<sub>T</sub></b>	\$69.99
TS-90	26" - 56"	<b>64625<sub>T</sub></b>	79.99
9009	Rubber V block	<b>64621<sub>T</sub></b>	12.99
9006	Trailer brkt	<b>64628<sub>T</sub></b>	13.99
9007	Insert Shaft	<b>64629<sub>T</sub></b>	19.99



### The Straight Tube Twist Lock Mount Transom Saver

All models are zinc plated and fully adjustable.

Mfg #	Description	Order No.	Retail
TS-81	21" - 30"	<b>64610<sub>T</sub></b>	\$54.99
TS-83	20" - 53"	<b>64612<sub>T</sub></b>	64.99
9009	Rubber V block	<b>64621<sub>T</sub></b>	12.99
9006	Trailer brkt	<b>64628<sub>T</sub></b>	13.99
9007	Insert Shaft	<b>64629<sub>T</sub></b>	19.99



### The "Straight Tube" Roller Mount Transom Saver

All models are zinc plated and adjustable.

Mfg #	Description	Order No.	Retail
TS-80	21" - 30"	<b>64618<sub>T</sub></b>	\$54.99
TS-82	30" - 53"	<b>64620<sub>T</sub></b>	64.99
9009	Rubber V block	<b>64621<sub>T</sub></b>	12.99



### Roller Mount Transom Saver

All models are adjustable and have a zinc plated finish.

Mfg #	Description	Order No.	Retail
TS-86	23" - 37"	<b>64614<sub>T</sub></b>	\$69.99
TS-91	26" - 56"	<b>64616<sub>T</sub></b>	79.99
9009	Rubber V block	<b>64621<sub>T</sub></b>	12.99

Navigation  
Lites

Steering/  
Controls

Hardware/  
Fasteners

Covers/  
Windshield

Pumps/  
Int. Lites

Electric/  
Battery

Trolling  
Motor

Gauges

Electronics/  
Radios

Fuel

Lube/  
Motor Care

Aux. Brkts/  
Tilt/Trim

Spark Plug/  
Starters

Props

Seats/  
Pedestals

Anchors/  
Rod Holder

Winches/  
Jacks

Lites/  
Tie Downs

Tires/  
Couplers

Boat  
Care

Misc./  
Flooring

Ski's/Tubes

Floatation

Ladders

Water  
Front

Fenders/  
Dock Lines



Navigation  
LitesSteering/  
ControlsHardware/  
FastenersCovers/  
WindshieldPumps/  
Int. LitesElectric/  
BatteryTrolling  
Motor

Gauges

Electronics/  
Radios

Fuel

Lube/  
Motor CareAux. Brkts/  
Tilt/TrimSpark Plug/  
Starters

Props

Seats/  
PedestalsAnchors/  
Rod HolderWinches/  
JacksLites/  
Tie DownsTires/  
CouplersBoat  
CareMisc./  
Flooring

Ski's/Tubes

Floatation

Ladders

Water  
FrontFenders/  
Dock Lines**PANTHER**

Adjustable Motor Support  
Plated tubing, removable,  
adjusts 28" to 59".

Mfg #	Description	Order No.	Retail
55-1900	Motor support	<b>26400</b>	\$69.99
55-1950	Over roller brkt	<b>26401</b>	7.49
99-55805	"V" block only	<b>26405</b>	14.99

**SWIVLEZE**

Angled Adjustable  
Reach Transom Saver

- Angle adjustment from 0° to 36° in 12° increments
- Locking feature prevents unintentional detachment
- Fits any trailer • Steel construction with AquaArmor corrosion resistant black finish on the tubes

Mfg #460-ADJ  
**Order No. 00756<sup>THF</sup>** \$169.99

**PANTHER**

Universal Motor Support  
Mounts either to the trailer w/a  
removable bracket or over the roller.  
Fully adjustable 34" to 46".

Mfg #55-2100  
**Order No. 57131** \$67.99

**SWIVLEZE**

Transom Saver  
Deluxe adjustable head with  
composite pads. Aluminum tub-  
ing construction. Bolt-on mount-  
ing, 23" to 35" Adjustable length.

Mfg #SP-400-RB  
**Order No. 00750** \$63.99

**JIF**  
JIF MARINE LLC

Tourney Pro Motor Support

- Adjustable from 24" to 36"
- Constructed with high strength aluminum
- Includes bolt on and over the roller brackets

Mfg #FXJ  
**Order No. 30620** \$59.99

**JIF**  
JIF MARINE LLC

Adjustable Transom Saver

- Adjustable from 28" to 59"
- Reaches hard to access trailer crossbars
- Easy to install bracket attachment

Mfg #GAX  
**Order No. 30618** \$69.99

Lock'N Stow

Unlike traditional transom savers, Lock'N Stow does not "Tie" the outboard to the trailer.

Mfg #	Application	Order No.	Retail
10309	OMC 1989 & newer - 100 hp and up	<b>00752<sup>THF</sup></b>	\$119.99
10108	Mercury engines 75 hp - 200 hp EFI	<b>00753<sup>THF</sup></b>	129.99
10107	Mercury engines 200 Opti - 250 EFI	<b>00754<sup>THF</sup></b>	139.99
P10106	Replacement bushing - Mercury	<b>00751</b>	8.49

**SWIVLEZE**  
astwood

Outboard Lock

Lock design features a free spinning collar that will turn if attacked by gripping tools without loosening the lock.  
Tough hardened stainless steel construction.

**McGard**

Mfg #	Application	Threads	Order No.	Retail
74036	Mercury 75hp & up	1/2" - 20	<b>35804<sup>THF</sup></b>	\$43.29
74037	Yamaha 50hp & up	12 x 1.25	<b>35806<sup>THF</sup></b>	43.29
74038	Johnson/Evinrude 40hp & up	1/2" - 13	<b>35808<sup>THF</sup></b>	43.29
74049	Universal Smaller Outboards	5/16" - 18	<b>35810<sup>THF</sup></b>	43.29

**FULTON**

**Outboard Motor Lock**  
Mounts on most outboard motors. Coated with a long lasting black powder coat.

Mfg #OML-0127  
**Order No. 22750**     \$44.99

**PANTHER**

**Outboard Motor Lock**  
• Heavy carbon steel design  
• Fits turnbuckle mounted engines  
• Recessed solid brass lock  
• Noise dampeners reduce rattle

Mfg #75-8000  
**Order No. 26398**     \$29.99

**attwood**

**Safety Cable**  
Prevents loss of small outboard engines. Clear vinyl coated heavy duty steel cable. 3/32" diameter x 50" long.

Mfg # 11664-3  
**Order No. 09420**     \$17.99

Navigation Lites  
Steering/ Controls  
Hardware/ Fasteners  
Covers/ Windshield  
Pumps/ Int. Lites  
Electric/ Battery  
Trolling Motor  
Gauges

**Lower Unit Locks**

- Tamper Resistant
- Marine Grade Stainless Steel Construction
- Quick and Easy Installation
- No Alteration Required

\*SPECIAL ORDER\*

Mfg #	Application	Order No.	Retail
75-8410	Evinrude 150-300 hp	<b>26388</b> <sup>THF</sup>	\$139.99
75-8310	Mercury Verado 150-300, Optimax 115-250 hp	<b>26387</b> <sup>THF</sup>	139.99
75-8710	Suzuki 200-300hp	<b>26392</b> <sup>THF</sup>	139.99
75-8610	Yamaha/Honda Yamaha 200+, all Honda	<b>26391</b> <sup>THF</sup>	\$139.99
75-8510	Yamaha short bolt 150 & less - 20" shaft	<b>26389</b> <sup>THF</sup>	139.99
75-8502	Yamaha short bolt 150 & less - 25" shaft	<b>26390</b> <sup>*THF</sup>	189.99

Electronics/ Radios  
Fuel  
Lube/ Motor Care

Aux. Brkts/ Tilt/Trim

Spark Plug/ Starters

Props

Seats/ Pedestals

Anchors/ Rod Holder

Winches/ Jacks

Lites/ Tie Downs

Tires/ Couplers

Boat Care

Misc./ Flooring

Ski's/Tubes

Floatation

Ladders

Water Front

Fenders/ Dock Lines

**Troll-A-Matic – 50 hp & Up**

Inexpensive, Lightweight, Easy to install. The Troll-A-Matic is constructed of tough fiberglass filled nylon to eliminate corrosion and rust. This revolutionary trolling device is completely automatic and swings up as speed is increased.

Mfg #	Description	Order No.	Retail
16401	Troll-A-Matic	<b>57500</b> <sup>T</sup>	\$114.99
NA	Replacement spring	<b>57502</b> <sup>T</sup>	10.49



Fig. 016.1

Fig. 016.2

**Easy Troller Trolling Plate**

- The Easy Trollers hinge design prevents damage to the trolling plate under inadvertent acceleration.
- Fits O/B and I/O motors from 50 hp and up
- Made in the USA from marine grade anodized aluminum and stainless steel.

Mfg #	Description	Order No.	Retail
016.1	Standard Model	<b>29307</b> <sup>THF</sup>	\$184.99
016.2	Model w/Fins	<b>29308</b> <sup>THF</sup>	236.99

Navigation  
Lites

Steering/  
Controls

Hardware/  
Fasteners

Covers/  
Windshield

Pumps/  
Int. Lites

Electric/  
Battery

Trolling  
Motor

Gauges

Electronics/  
Radios

Fuel

Lube/  
Motor Care

Aux. Brkts/  
Tilt/Trim

Spark Plug/  
Starters

Props

Seats/  
Pedestals

Anchors/  
Rod Holder

Winches/  
Jacks

Lites/  
Tie Downs

Tires/  
Couplers

Boat  
Care

Misc./  
Flooring

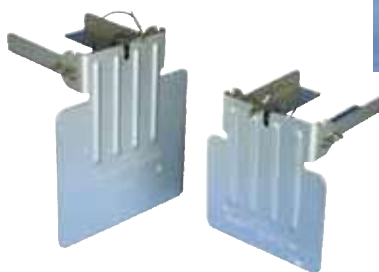
Ski's/Tubes

Floatation

Ladders

Water  
Front

Fenders/  
Dock Lines



**DAVIS****THE  
HAPPY  
TROLLER**

Slows even the big motors down to that  
"ever so slow" fish tantalizing speed.

Large Troller: I/O's & Outboards Over 50 HP

Small Troller: Outboards Up to 50 HP

Lil' Fella: Outboards Up to 25 HP

Mfg #	Description	Order No.	Retail
460	Large Troller	 <b>28220</b> <sub>THF</sub>	\$159.99
461	Small Troller	 <b>28224</b> <sub>THF</sub>	149.99
462	Lil' Fella	<b>28227</b> <sub>THF</sub>	89.99
468	Spring repair kit	<b>28230</b> <sub>THF</sub>	\$10.99

**\*\*SPECIAL ORDER\*\***
[www.nauticusinc.com](http://www.nauticusinc.com)

**ProTroller Series**

Two products in one

ProTrollers incorporate the ability to transform SmartTabs into trolling brakes with a flip of the lever handle. Move the handle up or down to switch between the most effective trim tabs in the market to the most effective trolling brake available.

In the vertical position the plates create equal braking on both sides of the boat. This not only reduces trolling speed by up to 35% but allows the boat to track straight even at the ultra low speed. Additionally steering control is not lost because the propeller is not restricted. The ProTroller series is a serious plus for Walleye fishermen.



Mfg #	Description	Boat	Order No.	Retail
SXPT9510-40-BL	9.5"x10" plates/40# actuators	14'-17'	<b>44413</b> <sub>T</sub>	\$219.99
SXPT9510-60-BL	9.5"x10" plates/60# actuators	16'-18'	<b>44414</b> <sub>T</sub>	219.99

As the boat speed increases, the water pressure also increases. Once the water pressure exceeds the actuator load rating the trim plates begin to move upward until they are horizontal with the bottom of the boat.

**"Smart Tabs" SX**

Incorporates all the features of original Smart Tabs! Also provides durability with the no maintenance thermo molded co-polymer composite design. Tracking Ribs have been added to improve handling at higher speeds.



Mfg #	Description	Boat	Order No.	Retail
SX9510-40-BL	9.5"x10" plates/40# actuators	14'-16'	<b>44410</b> <sub>T</sub>	\$169.99
SX9510-60-BL	9.5"x10" plates/60# actuators	16'-18'	<b>44411</b> <sub>T</sub>	169.99
SX9510-80-BL	9.5"x10" plates/80# actuators	18'-22'	<b>44412</b> <sub>T</sub>	169.99

**Bolt Electric Trim Tabs**

- 12v actuators with six foot wire harness
- Stainless steel trim planes
- Control box
- 20' Wire harness with waterproof connectors




Mfg #	Description	Order No.	Retail
BOLT129	12x9 Trim Plane kit	<b>08161</b> <sub>T</sub>	\$584.99
BOLT1212	12x12 Trim Plane kit	<b>08162</b> <sub>T</sub>	625.99

**\*\*SPECIAL ORDER\*\***



### Trim Tab Kits

Decrease the time in "Transition mode" between displacement and planing. Reduce fuel consumption, laboring engines, hull stress, wake and pounding. Eliminate squatting, listing, and porpoising. Increase speed and improve visibility and handling.

Maximum efficiency is obtained by using the longest span planes possible. The planes are secured to the trailing edge of the bottom. Measure the hull from centerline to the chine or turn of the bilge, and select the longest span planes that can be used (allowing 3"-4" of leeway).



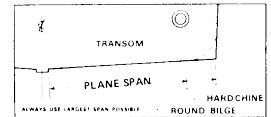
**\*\*TRIM TABS are Special Order\*\***

**Span** - Inboard to outboard measurement

**Chord** - Fore to aft measurement

Chord Span	Hull Length	Order No.	Retail
9" 12"	15'-24'	<b>08151<sub>T</sub></b>	\$679.99
9" 18"	18'-24'	<b>08153<sub>T</sub></b>	739.99
9" 24"	20'-26'	<b>08155<sub>T</sub></b>	769.99
9" 30"	25'-30'	<b>08157<sub>T</sub></b>	809.99

Trim plane sets **DO NOT** come with a control you **MUST** order a control when you order your trim tabs.



### Sport Tab System

Ideal for trailered boats in the 17'-23' range. Their unique bat wing design provides 30% more lift than conventional trim tabs and their space saving design ensures easy installation on virtually any transom.

Mfg #	Hull	Order No.	Retail
M80	10" Tab 17' - 20' Hull	<b>08182<sub>T</sub></b>	\$749.99
M120	12" Tab 20' - 23' Hull	<b>08183<sub>T</sub></b>	799.99



Nothing mounts inside the boat!!



### Self Leveling Tab System

You can plane at lower speeds, improve hole shot & eliminate porpoising. The SLT reacts instantly to boat speed and water pressure by adding trim when needed.

Mfg #	Hull	Order No.	Retail
SLT6	8" Tab 10' - 14' Hull	<b>08180<sub>T</sub></b>	\$139.99
SLT10	10" Tab 14' - 20' Hull	<b>08181<sub>T</sub></b>	159.99



### Euro Style Rocker Switch

Waterproof rocker switch.

Mfg #	Order No.	Retail
ES2000	<b>08165<sub>T</sub></b>	\$99.99

### Replacement Parts

Mfg #	Description	Order No.	Retail
V351HPU1	Hydraulic power unit	<b>08171<sub>T</sub></b>	\$399.99
A1101A	Actuator assembly	<b>08169<sub>T</sub></b>	109.99
VP1135G	Green wire solenoid*SO	<b>08175*<sub>T</sub></b>	62.99
VP1135R	Red wire solenoid*SO	<b>08174*<sub>T</sub></b>	62.99
T1125-20	20' Hydraulic hose tubing	<b>08179<sub>T</sub></b>	41.49



**\*\*SPECIAL ORDER\*\***

Navigation  
Lites

Steering/  
Controls

Hardware/  
Fasteners

Covers/  
Windshield

Pumps/  
Int. Lites

Electric/  
Battery

Trolling  
Motor

Gauges

Electronics/  
Radios

Fuel

Lube/  
Motor Care

Aux. Brkts/  
Tilt/Trim

Spark Plug/  
Starters

Props

Seats/  
Pedestals

Anchors/  
Rod Holder

Winches/  
Jacks

Lites/  
Tie Downs

Tires/  
Couplers

Boat  
Care

Misc./  
Flooring

Ski's/Tubes

Floatation

Ladders

Water  
Front

Fenders/  
Dock Lines



**PANTHER****Safe - Skeg**

Whether you are looking to protect your new skeg, repair your damaged one or even just add some shine. 316 marine grade stainless steel Safe-Skeg is brilliantly polished and ready to install!

Kit includes: Mounting hardware and instructions.

<b>Mfg #</b>	<b>Description</b>	<b>Order No. <sub>T</sub></b>	<b>Retail</b>
35-SS600	Mercruiser Pre Alpha One	<b>26350</b>	\$89.99
35-SS605	Mercruiser Alpha One '89	<b>26351</b>	89.99
35-SS610	Mercruiser Alpha One Gen II	<b>26352</b>	89.99
35-SS615	Mercruiser Bravo III	<b>26353</b>	89.99
35-SS620	Mercury 150 '88, Mercury 135 '87	<b>26354</b>	89.99
35-SS625	Honda 90, Mercury 75	<b>26355</b>	89.99
35-SS630	Evinrude/Johnson 150, 175 ('86 thru '03)	<b>26356</b>	\$89.99
35-SS635	Evinrude/Johnson 90, 100, 115, 120, 140	<b>26357</b>	89.99
35-SS640	Evinrude/Johnson 60, 70	<b>26358</b>	89.99
35-SS645	Yamaha 150 '09	<b>26359</b>	89.99
35-SS650	Honda 35, 40, 45/Suzuki 40, 50, 60	<b>26360</b>	89.99
35-SS655	Volvo SX ('06-'09)/Volvo DP ('96-'07)	<b>26361</b>	89.99
35-SS660	Mercury 200 Optimax	<b>26362</b>	89.99
35-SS665	Volvo SX ('95-'06)	<b>26363</b>	\$89.99
35-SS670	Evinrude/Johnson 150, 175, ('04-'10)	<b>26364</b>	89.99
35-SS675	Evinrude/Johnson 75, 90 E-Tec	<b>26365</b>	89.99
35-SS680	Suzuki 90, 115, 140/Evinrude/Johnson 60, 70, 90	<b>26366</b>	89.99
35-SS685	Honda 135, 150, 200, 225	<b>26367</b>	89.99
35-SS690	Yamaha 155, 130 ('03-'09)	<b>26368</b>	89.99
35-SS695	Yamaha 200	<b>26369</b>	89.99
35-SS700	Yamaha 60, 70, 80, 90, 100 ('02-'09)	<b>26370</b>	\$89.99
35-SS705	Yamaha 40, 50 ('01-'09)	<b>26371</b>	89.99
35-SS710	Evinrude/Johnson 40, 50 by Suzuki	<b>26372</b>	89.99
35-SS715	Mercury 150 ('12-present)	<b>26374</b>	89.99
35-SS720	Yamaha V-Max (2013)	<b>26375</b>	89.99
35-SSKIT1	Safe-Skeg hardware kit	<b>26373</b>	32.99

**MEGAWARE**  
**SkegPro®**


Made from anti-corrosive, 18 gauge 304 SS, SkegPro protects against harsh marine environments. Its mirror-polished finish creates a custom look and lasting protection.




- Protects against ramp dragging, rocks, debris and submerged objects
- Installs easily in less than 10 minutes
- A model to fit virtually any skeg

<b>Mfg #</b>	<b>Application</b>	<b>Order No.</b>	<b>Retail</b>
SP655	Mercury/Mercruiser Alpha One 1973-up	<b>39533<sub>T</sub></b>	\$69.95
SP663	Yamaha VMAX, HPDI & EFI 150hp, 175hp 2004+	<b>39535<sub>T</sub></b>	69.95
SP664	Mercury	<b>39536<sub>T</sub></b>	69.95
SP667	Mercruiser Bravo One, Three	<b>39537<sub>T</sub></b>	69.95
SP674	V6 Etec & Yamaha VMax	<b>39539<sub>T</sub></b>	69.95

\*\*For a Full List of Applications please call or visit [www.keelguard.com/modelguide](http://www.keelguard.com/modelguide)



- On Plane Quicker
- Eliminates Chine Walking
- Wipes out Cavitation
- True Stabilization
- Reduces Bow Rise
- Stops Porpoising
- Saves Fuel
- Aids in Pulling Skiers


Mfg #	Description	Order No.	Retail
SR-1	Black Standard 25-365 hp	 <b>36710<sub>T</sub></b>	\$64.99
SR-2	White Standard 25-365 hp	 <b>36711<sub>T</sub></b>	64.99
SR-3	Grey Standard 25-365 hp	 <b>36712<sub>T</sub></b>	64.99
JR-1	Black Junior up to 25 hp	<b>36708<sub>T</sub></b>	\$54.99
JR-2	White Junior up to 25 hp	<b>36709<sub>T</sub></b>	54.99

FEATURES: • Electronic throttle control • Precision throttle control • Momentary full throttle burst control • 25' cable • Water resistant control • Easy installation • Works with all Panther electro steer units



TrollMaster Pro  
Control boat speed with a dial that aids in recreating exact speeds with the idle function.

TrollMaster Pro2: *(Limited Availability)*  
Adds 10 times the micro speed control adjustments. Allows for momentary bursts of full throttle speed for adjusting your heading.

Mfg #	Description	 Order No.	Retail
TM200DPRO	Honda 5, 8, 9.9 & 15 ('80-2000) PRO	<b>57170<sub>TW</sub></b>	\$304.99
TM207DPRO	Honda 8, 9.9, 15 & 20 ('01-present) PRO	<b>57179<sub>TW</sub></b>	304.99
TM201DPRO	Merc Mariner ('90-'04) & Yamaha ('90-'06) 9.9 & 15 PRO	<b>57173<sub>TW</sub></b>	\$304.99
TM203DPRO	Merc 4,5&6 (All Years) Nissan/Tohatsu 5 & 6 ('95-Present) PRO	<b>57176<sub>TW</sub></b>	304.99
TM209DPRO	Mercury 15 & 20 Tiller Only ('05-'09) PRO	<b>57185<sub>TW</sub></b>	304.99
TM212DPRO	Merc 8 & 9.9 Remote Shift/Throttle ('05-pres.)/Evin. 9.8 ('13-pres)	<b>57164<sub>TW</sub></b>	304.99
TM213DPRO	Mercury 8 & 9.9 Tiller ('05-present) PRO	<b>57167<sub>TW</sub></b>	304.99
TM214DPRO	Merc. 15 & 20 Remote & Tiller ('11-Present) PRO/Evin. 15 ('12-pres)	<b>57194<sub>TW</sub></b>	304.99
TM206DPRO	Yamaha 6, T8 (All Years) & 9.9 ('08-present) PRO	<b>57160<sub>TW</sub></b>	\$304.99
TM210DPRO	Yamaha High Thrust/Large Power Head 9.9, 15 (see application) PRO	<b>57188<sub>TW</sub></b>	304.99
TM210DPRO2	Yamaha High Thrust/Large Pwr Head 9.9, 15 (see application) PRO2	<b>57189<sub>TW</sub></b>	314.99
TM208DPRO	John/Evin/Suzuki 9.9 & 15 ('03-'11) PRO	<b>57182<sub>TW</sub></b>	\$304.99
TM211DPRO	Niss/Tohatsu 8 & 9.8 ('03-present) Featherweights PRO	<b>57191<sub>TW</sub></b>	\$304.99
TM216DPRO	Merc 15,20 EFI (2018+), Tohatsu 9.9, 15, 20 EFI	<b>57204<sub>TW</sub></b>	304.99
TM215DPRO	Suzuki 9.9/15 Remote & Tiller 2014 PRO	<b>57201<sub>TW</sub></b>	\$304.99
TM201DMT	Manual throttle conversion	<b>57198<sub>T</sub></b>	\$29.99
TM-MG1	Replacement Servo Kit	<b>57199<sub>T</sub></b>	39.99



Troll Master Mount  
Conveniently mount the Troll master remote control to any Anglers Pal electronics mount for viewing at almost any angle.

Mfg #95-0325  
**Order No. 26443<sub>TF</sub>** \$44.99

Navigation  
Lites

Steering/  
Controls

Hardware/  
Fasteners

Covers/  
Windshield

Pumps/  
Int. Lites

Electric/  
Battery

Trolling  
Motor

Gauges

Electronics/  
Radios

Fuel

Lube/  
Motor Care

Aux. Brkts/  
Tilt/Trim

Spark Plug/  
Starters

Props

Seats/  
Pedestals

Anchors/  
Rod Holder

Winches/  
Jacks

Lites/  
Tie Downs

Tires/  
Couplers

Boat  
Care

Misc./  
Flooring

Skis/Tubes

Floatation

Ladders

Water  
Front

Fenders/  
Dock Lines

Navigation  
LitesSteering/  
ControlsHardware/  
FastenersCovers/  
WindshieldPumps/  
Int. LitesElectric/  
BatteryTrolling  
Motor

Gauges

Electronics/  
Radios

Fuel

Lube/  
Motor CareAux. Brkts/  
Tilt/TrimSpark Plug/  
Starters

Props

Seats/  
PedestalsAnchors/  
Rod HolderWinches/  
JacksLites/  
Tie DownsTires/  
CouplersBoat  
CareMisc./  
Flooring

Ski's/Tubes

Floatation

Ladders

Water  
FrontFenders/  
Dock Lines

### TrollMasterPro 3+ Wireless Remote Throttle & Steering Control

Enjoy the Freedom of Full Wireless Thottle & Steering Control

- Infinite, Precision throttle control
- Momentary full throttle burst
- Engine specific hardware fits neatly under the cowling

Mfg #	Description	Order No.	Retail
TMPRO3PLUS	Wireless Controller	57227TF	\$354.99
TM200HWKIT	Honda 5, 8, 9.9, & 15 ('80-'00)	57210THF	\$29.99
TM201HWKIT	Merc 9.9, 15 ('90-'04), Yamaha 9.9, 15 ('90-'06)	57211THF	29.99
TM203HWKIT	Merc 4, 5, 6 (All Years), Nissan/Tohatsu 5, 6 ('95-present)	57212THF	29.99
TM206HWKIT	Yamaha 9.9 ('08-Present), Yamaha 6, 8 ('99-'12)	57213THF	29.99
TM207HWKIT	Honda 8, 9.9, 15, 20 ('01-Present)	57214THF	29.99
TM208HWKIT	Johnson/Evinrude 9.9, 15 ('03-'11), Suzuki 9.9, 15 ('03-'12)	57215THF	29.99
TM209HWKIT	Merc 15 ('05-'09), Merc 15, 20T ('05-'09)	57216THF	\$29.99
TM210HWKIT	Yamaha 9.9('05-'07)	57218THF	29.99
TM212HWKIT	Merc 8, 9.9 (05-Present), Evin 9.8 ('13-Present)	57219THF	29.99
TM214HWKIT	Merc 15, 20 ('11-Present), Merc 20T ('05-'09), Evin 15 ('12-Present)	57220THF	29.99
TM215HWKIT	Suzuki 9.9, 15, 20EFI ('14-Present)	57221THF	29.99
TM216HWKIT	Merc 15/20 EFI, Nissan/Tohatsu 9.9, 15, 20 EFI (2018)	57222THF	29.99

It's Perfectly Clear...

iTroll G2 is the most advanced throttle controller ever created!



### iTroll - Precision Speed Controller

- Fully water proof design
- 1000 Throttle positions
- Secondary cruising speed
- Remote idle/Run switch capability
- Neutral safety capabilities
- 32 Character Illuminted display
- "Last Idle" Recall
- Drag Mode
- Industry leading safety features
- TWO Year Warranty



Mfg #	Description	Order No.	Retail
iTroll G2	iTroll G2 Electronics Kit	29400TW	\$279.99
iTroll G2H	iTroll G2 Electronics Kit w/Hunt mode enabled	29401TW	384.99
H1	Honda 8-20hp 2001-2014	29406TW	\$99.99
E1	Evinrude E-tec 15 & 25hp all years	29408TW	99.99
M1	BRP 9.8 '13-'14, Merc 8/9.9 '05-'14, Nissan 8/9.8 '03	29410TW	99.99
M2	Mercury 6/8/9.9/15 2-Stroke '98 thru	29412TW	99.99
M3	Mercury 15 4-Stroke '05-'14, Tohatsu 15 4-Stroke '03 thru	29414TW	99.99
M4	Merc/Tohatsu 15/20 EFI 2018 4-stroke	29415TW	99.99
S1	BRP 9.9/15 4-Stroke '02-'13, Suzuki 9.9/15 TH Series '02-'13	29416TW	99.99
S2R	Suzuki 9.9/15/20 EFI Remote - All Years	29418TW	99.99
S2T	Suzuki 9.9/15/20 EFI Tiller - All Years	29420TW	149.99
T1	Merc 4/5/6 4-Stroke All Years, Nissan 5/6 4-Stroke '95 thru	29422TW	99.99
Y	Yamaha 9.9/15 4-Stroke '90-'98, Merc 15 4-Stroke '90-'94	29424TW	99.99
Y1	Yamaha 9.9/15 4-Stroke '99-'04	29426TW	99.99
Y2R	Yamaha 8 4-Stroke All Years, Yamaha 9.9 4-Stroke '08 thru	29428TW	99.99
Y3	Yamaha 9.9/15 4-Stroke '05 thru	29430TW	99.99
iT. Billet	Custom Billet Aluminum Mount	29434TW	109.99
iT. Remote	Remote Idle/Run Switch	29436TW	32.99
iTroll.Hunt	HUNT mode Software Upgrade *SO	29440TW	104.99

Evinrude				
HP	Year	Type	Fit Kit	Notes
9.8	2013 +	4 Stroke	M1	For Tiller and Remote Models
9.9 "TH Series"	2002 - 2013	4 Stroke	S1	For Tiller and Remote Models
15 "TH Series"	2002 - 2013	4 Stroke	S1	For Tiller and Remote Models
15 E-TEC	All	2 Stroke	E1	For Tiller and Remote Models
25 E-TEC	All	2 Stroke	E1	For Tiller and Remote Models
Honda				
HP	Year	Type	Fit Kit	Notes
8	Pre - 2001	4 Stroke	H	Has Flat Lid - For Tiller and Remote Models
Classic 8	2001 +	4 Stroke	H	Has Flat Lid - For Tiller and Remote Models
8	2001 +	4 Stroke	H1	Rounded Lid - For Tiller and Remote Models
9.9	2001 +	4 Stroke	H1	For Tiller and Remote Models
15	2001 +	4 Stroke	H1	For Tiller and Remote Models
20	2001 +	4 Stroke	H1	For Tiller and Remote Models
Johnson				
HP	Year	Type	Fit Kit	Notes
9.8	2013 +	4 Stroke	M1	For Tiller and Remote Models
9.9 "TH Series"	2002 - 2013	4 Stroke	S1	For Tiller and Remote Models
15 "TH Series"	2002 - 2013	4 Stroke	S1	For Tiller and Remote Models
Mercury				
HP	Year	Type	Fit Kit	Notes
6	1991 +	2 Stroke	M2	For Tiller and Remote Models
8	1991 +	2 Stroke	M2	For Tiller and Remote Models
9.9	1991 +	2 Stroke	M2	For Tiller and Remote Models
15	1991 +	2 Stroke	M2	For Tiller and Remote Models
4	All	4 Stroke	T1	For Tiller and Remote Models External Fuel Tank ONLY
5	All	4 Stroke	T1	For Tiller and Remote Models External Fuel Tank ONLY
6	All	4 Stroke	T1	For Tiller and Remote Models External Fuel Tank ONLY
8	2005 +	4 Stroke	M1	For Tiller and Remote Models
9.9	1990 - 1998	4 Stroke	Y	For Tiller and Remote Models
	1999 - 2004	4 Stroke	Y1	For Tiller and Remote Models
	2005 +	4 Stroke	M1	For Tiller and Remote Models
15	1990 - 1998	4 Stroke	Y	For Tiller and Remote Models
	1999 - 2004	4 Stroke	Y1	For Tiller and Remote Models
	2005 +	4 Stroke	M3	For Tiller and Remote Models
	2018 +	4 Stroke -EFI	M4	For Tiller and Remote Models
20	2005 +	4 Stroke	M3	For Tiller and Remote Models
	2018 +	4 Stroke -EFI	M4	For Tiller and Remote Models

Nissan				
HP	Year	Type	Fit Kit	Notes
5	1995 +	4 Stroke	T1	For Tiller and Remote Models
6	1995 +	4 Stroke	T1	For Tiller and Remote Models
8	2003 +	4 Stroke	M1	For Tiller and Remote Models
9.8	2003 +	4 Stroke	M1	For Tiller and Remote Models
Suzuki				
HP	Year	Type	Fit Kit	Notes
9.9 "TH Series"	2002 - 2013	4 Stroke	S1	For Tiller and Remote Models
15 "TH Series"	2002 - 2013	4 Stroke	S1	For Tiller and Remote Models
9.9 / 15 / 20 EFI REMOTE	All	4 Stroke	S2R	For Remote Control Model
9.9 / 15 / 20 EFI TILLER	All	4 Stroke	S2T	For Tiller (Twist Grip) Model
Tohatsu				
HP	Year	Type	Fit Kit	Notes
4	1995 +	4 Stroke	T1	For Tiller and Remote Models External Fuel Tank ONLY
5	1995 +	4 Stroke	T1	For Tiller and Remote Models External Fuel Tank ONLY
6	1995 +	4 Stroke	T1	For Tiller and Remote Models External Fuel Tank ONLY
8	2003 +	4 Stroke	M1	For Tiller and Remote Models
9.8/9.9	2003 +	4 Stroke	M1	For Tiller and Remote Models
9.9	2018 +	4 Stroke -EFI	M4	For Tiller and Remote Models
15	2005 +	4 Stroke	M3	For Tiller and Remote Models
	2018 +	4 Stroke -EFI	M4	For Tiller and Remote Models
20	2005 +	4 Stroke	M3	For Tiller and Remote Models
	2018 +	4 Stroke -EFI	M4	For Tiller and Remote Models
Yamaha				
HP	Year	Type	Fit Kit	Notes
8	All	4 Stroke	Y2R	For Tiller and Remote Models
9.9	1990 - 1998	4 Stroke	Y	For Tiller and Remote Models
	1999 - 2004	4 Stroke	Y1	For Tiller and Remote Models
	2005 - 2007	4 Stroke	Y3	For Tiller and Remote Models
	2008 +	4 Stroke	Y2R	For Tiller and Remote Models
15	1990 - 1998	4 Stroke	Y	For Tiller and Remote Models
	1999 - 2004	4 Stroke	Y1	For Tiller and Remote Models
	2005 +	4 Stroke	Y3	For Tiller and Remote Models
20	2005 +	4 Stroke	Y3	For Tiller and Remote Models

Navigation  
Lites

Steering/  
Controls

Hardware/  
Fasteners

Covers/  
Windshield

Pumps/  
Int. Lites

Electric/  
Battery

Trolling  
Motor

Gauges

Electronics/  
Radios

Fuel

Lube/  
Motor Care

Aux. Brkts/  
Tilt/Trim

Spark Plug/  
Starters

Props

Seats/  
Pedestals

Anchors/  
Rod Holder

Winches/  
Jacks

Lites/  
Tie Downs

Tires/  
Couplers

Boat  
Care

Misc./  
Flooring

Ski's/Tubes

Floatation

Ladders

Water  
Front

Fenders/  
Dock Lines



Navigation  
LitesSteering/  
ControlsHardware/  
FastenersCovers/  
WindshieldPumps/  
Int. LitesElectric/  
BatteryTrolling  
Motor

Gauges

Electronics/  
Radios

Fuel

Lube/  
Motor CareAux. Brkts/  
Tilt/TrimSpark Plug/  
Starters

Props

Seats/  
PedestalsAnchors/  
Rod HolderWinches/  
JacksLites/  
Tie DownsTires/  
CouplersBoat  
CareMisc./  
Flooring

Ski's/Tubes

Flootation

Ladders

Water  
FrontFenders/  
Dock Lines

Trim Control Where It Belongs - At Your Finger Tips  
Dual or single switch kits. Designed to work with all teleflex steering systems, will retrofit many others as well.

Mfg #	Description	Order No.	Retail
PT10001P	Single Lever	60116 <sub>T</sub>	\$99.99
PT20001P	Dual Lever	60117 <sub>T</sub>	174.99

## Hot Trim

Floor mounted trim switch. A must for all tiller operated motors. Keep your hands where they belong, on the controls. Will operate Trim/Tilt & Transom Jacks. Comes completely prewired with complete instructions.



Mfg #	Order No.	Retail
HT-1-DP	57334	\$71.99

### Model 0100 Electro Steer For Kicker Motors



- Quick response
- Quick disconnect
- Durable waterproof motor
- Compact design
- Black anodized finish

Mfg #55-0100A \*SO  
**Order No. 56906<sub>TW</sub>** \$490.99



## The Brand New ..... T4

Through the tilt tube steering!

- 24' Cable allows you to steer your kicker from anywhere in your boat
- Mounts to your kicker motor in minutes
- Does not take up any space on your transom

Mfg #55-0102  
**Order No. 56904<sub>TW</sub>** \$541.99

\*Special Order\*



55-102NE



55-502NE

## Electro Steer

Unique solutions to steer your kicker motor. *For use with the Troll Master Pro 3, includes no controls*

Mfg #	Description	Order No.	Retail
55-102NE	9" mtr to mtr	56920 <sub>TW</sub>	\$472.99
55-502NE	4" mtr to mtr	56918 <sub>TW</sub>	597.99



Transom Trim Switch  
This transom trim switch provides a weatherproof tilt switch control system at the stern area of the boat to facilitate placing motor support in position with one person.



Mfg #      Order No.      Retail  
TTC-1-DP      57355      \$53.99



## Accessory Trim Switch

12' of cable allows easy and custom installation of this remote push button switch. This switch splices into existing applications or can be plugged into any Panther product.



Mfg #      Order No.      Retail  
55-1200      56915<sub>T</sub>      \$39.99